

ADVERTISERS MEDIA PACK

Reaching a community of ReMeLife Members and care professionals, that are caring for their families, clients and communities.



ReMeLife, a new kind of care

What's ReMeLife?

ReMeLife is a Membership based care platform, that serves the needs of anyone and everyone involved in care. And that's over 60% of the world's population.

Our Members

Members get free access to ReMeLife apps. They use them to build a care circle and community around those they care for, and support them daily with care management, content, entertainment and product purchasing.

What's unique?

Many things. ReMeLife's audience is loyal as they're using our free apps. And they get rewarded in tokens for using them to enhance the care of those around them, as well as being rewarded for making retail purchases in the ReMe Market.

WHAT OUR MEMBERS SAY

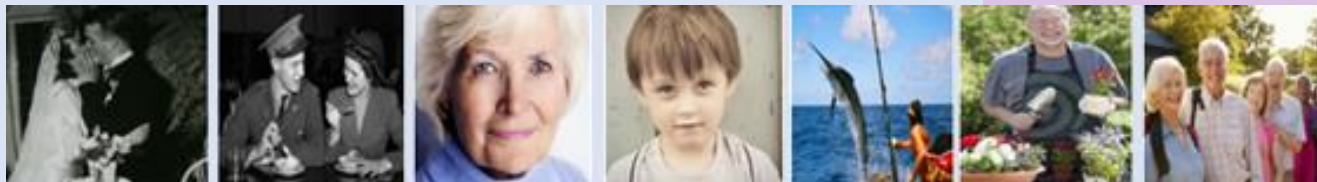
'I love getting rewarded for making regular purchases.'

'I recommend products to my friends more now, as I get rewarded for doing so.'

'Being part of an online community that I can relate to helps me each day.'

'ReMeLife's apps keep me connected to family and friends, and they're easy to use.'

'It's great that all our family members, from young to the old, use ReMeLife and gain from it.'



Loyal & supportive members

Why advertise with ReMeLife

ReMeLife is new, yes. You've not tried it before. True. It's using some new methods for engagement, such as crypto and blockchain. And who knows what the results of a campaign will be. Absolutely. That's why we give the first three months for free. Nothing to lose, everything to gain. So, there's no reason not to join us. And every reason to help us change care for the better.

- **Integrity**

ReMeLife is a social impact business and aims to 'give back' through our Members' participating in the growth of the business. And that's good for you.

- **Credibility**

We work with large corporates, charities and care organisations, and count leaders amongst our management team and shareholders.

- **Reach**

Whilst our primary audience for our apps has to date been the UK, however ReMeLife is a global platform and is rapidly gaining global awareness.

- **Audience**

Our Members are from all walks of life and range from those cared for to their carers, to family members of all ages and to care business and their teams. Basically, anyone that's involved in care, from the grand kids to granddad and his carer. And *that's* over 60% of the world.

- **Metrics**

ReMeLife is new and growing fast. Over 1,000 care homes use RemindMecare in the UK, and now with partners bringing Member groups regularly, with Members incentivised to refer their networks to ReMeLife and with the rapid recognition of crypto, growth is happening fast.

- **Flexibility**

You can present your products and services in multiple formats; from a banner ad to an email campaign, video to store front and drive traffic to your website or ReMe Market store; it's up to you.

- **Branding**

Participating in supporting a healthcare platform that has the mission to bring benefits to the care sector, will be beneficial to any brand. And, at no cost.

- **Promotions**

The ReMeLife platform provides the opportunity to promote campaigns of all sorts. Let's get creative. It's what our Members want.

THE NUMBERS

1,000+

client care homes

14,000+

subscribers

Global

membership

b2c/b2b

audience



Responsive audience

Pricing

We think you'll like our pricing, and it won't be long before you are partnering with us to build creative marketing strategies, that are rewards based, personalised and, simply exciting for our Members.

- **First 3 months free**

ReMeLife is different. So, we'll give you a free period to discover the opportunity, to build a relationship with our Members, and then to design a campaign from then on that will catch fire. Then, we'll charge you.

- **Free ReMe Market Listing**

Listing your products and the services in ReMe Market is free of charge. Yes, there's a commission. But our Members promotion of your products to their network, for which we pay them a fee, is free of charge to you. You and we just need to optimise the offer to them. That's the fun part.

- **Sure, we're negotiable**

We'll help you create a package, that includes blogs, video marketing, token rewards, event participation. Tell us your thoughts and let's create something new.

- **Partnerships**

We aim to create partnerships, for the benefit of our clients and our Members. For the more fun and rewards we can provide to our Members, the more they engage with the platform and the more they engage with our partners. It's a win: win: win for everyone.

RATE CARD FOR REMELIFE.COM

POSITION	PRICE PER MONTH	SPECIFICATIONS	
REMELIFE.COM			
Wallpaper	£1,000	1920 x 1080 Pixels	
Mid Page box	£800	1080 x 1920 Pixels	
Tower	£1,000	300 x 600 Pixels	
REME MARKET			
Mid Page Unit	£600	500 x 500 Pixels	
ReMe Market box	Large	£500	500 x 500 Pixels
ReMe Market box	Small	£400	400 x 400 Pixels



Comfortable pricing

Time to Fly

We live in a rapidly changing world. And as they say, 'fortune favours the bold'. ReMeLife is something new. Are you going to stand still as the wheel turns? Let us show you a new way.



CONTACTS

ADVERTISING: marketing@remelife.com

EDITORIAL: Radhika Narayan radhika@remelife.com

BLOGS: Radhika Narayan radhika@remelife.com

REME MARKET LISTINGS: market@remelife.com

COMMERCIAL CONTACT: Simon Hooper simon@remelife.com

© 2021 ReMeLife Services Ltd

Registered in England under company no. 14101705 ReMeLife and RemindMecare are registered trademarks.



Get in touch now. 0203 884 0162